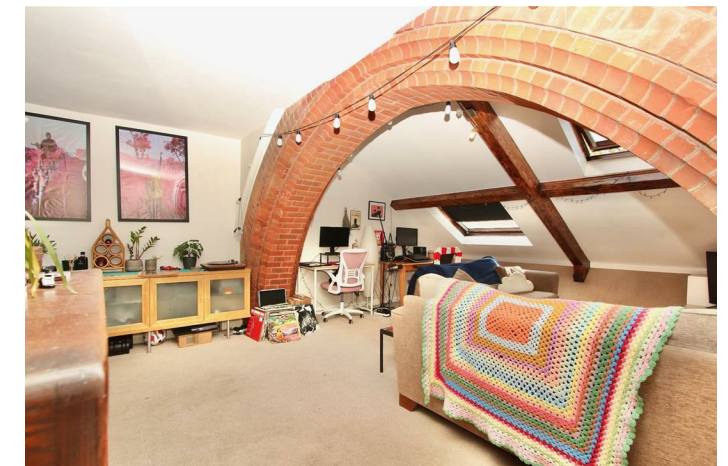
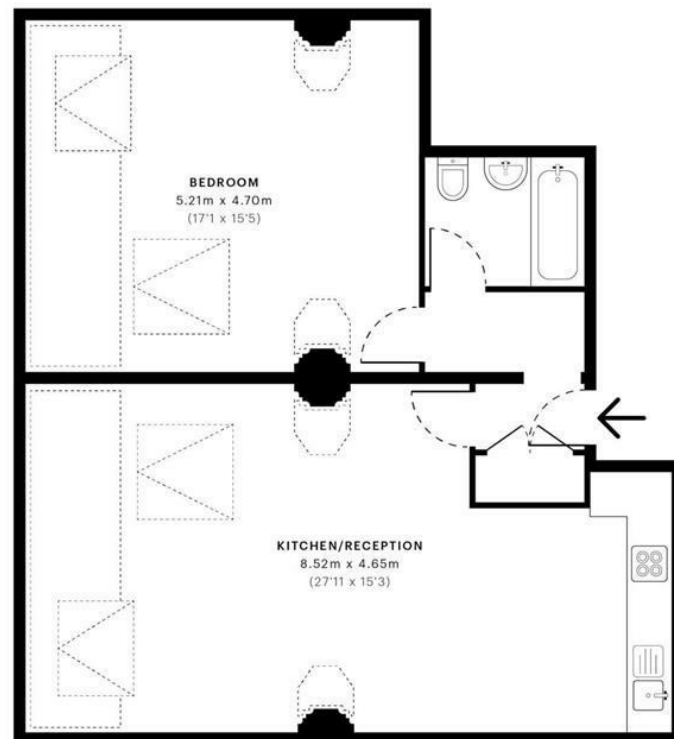


Mayfield Road, N8

GROSS INTERNAL AREA
69.78 sqm / 751.11 sqft



Energy Efficiency Rating		Current	Potential
Very energy efficient - lower running costs			
(92 plus) A			85
(81-91) B			
(69-80) C		77	
(55-68) D			
(39-54) E			
(21-38) F			
(1-20) G			
Not energy efficient - higher running costs			
England & Wales		EU Directive 2002/91/EC	

Contact Us:
02072 490272

E-mail us:
sales@michaelnaik.com

Visit our website:
www.michaelnaik.com

£1,800 PER MONTH

- One Bedroom Apartment
- First Floor
- Spanning 751 sq. ft
- Gothic Church Conversion
- Open Plan Kitchen/Living
- Available 25th May



Agents Note: Whilst every care has been taken to prepare these particulars, they are for guidance purposes only. All measurements are approximate and are for general guidance purposes only and whilst every care has been taken to ensure their accuracy, they should not be relied upon and potential buyers are advised to recheck the measurements.



About The Property...

Set on the first floor of an impressive gothic church conversion, located within just a short stroll of Crouch End High Street and Broadway , which offer popular local amenities and restaurants as well as excellent transport links which can be picked up.

The apartment offers bright and spacious accommodation, with a large open plan kitchen/lounge with space for dining, a fully fitted bathroom and a generously sized bedroom.

Key Information

Available 25th May

Offered Furnished

Reservation Deposit - £415 (forms part of security deposit)

Security Deposit - £2,075

Council Tax - Haringey - Band D

